

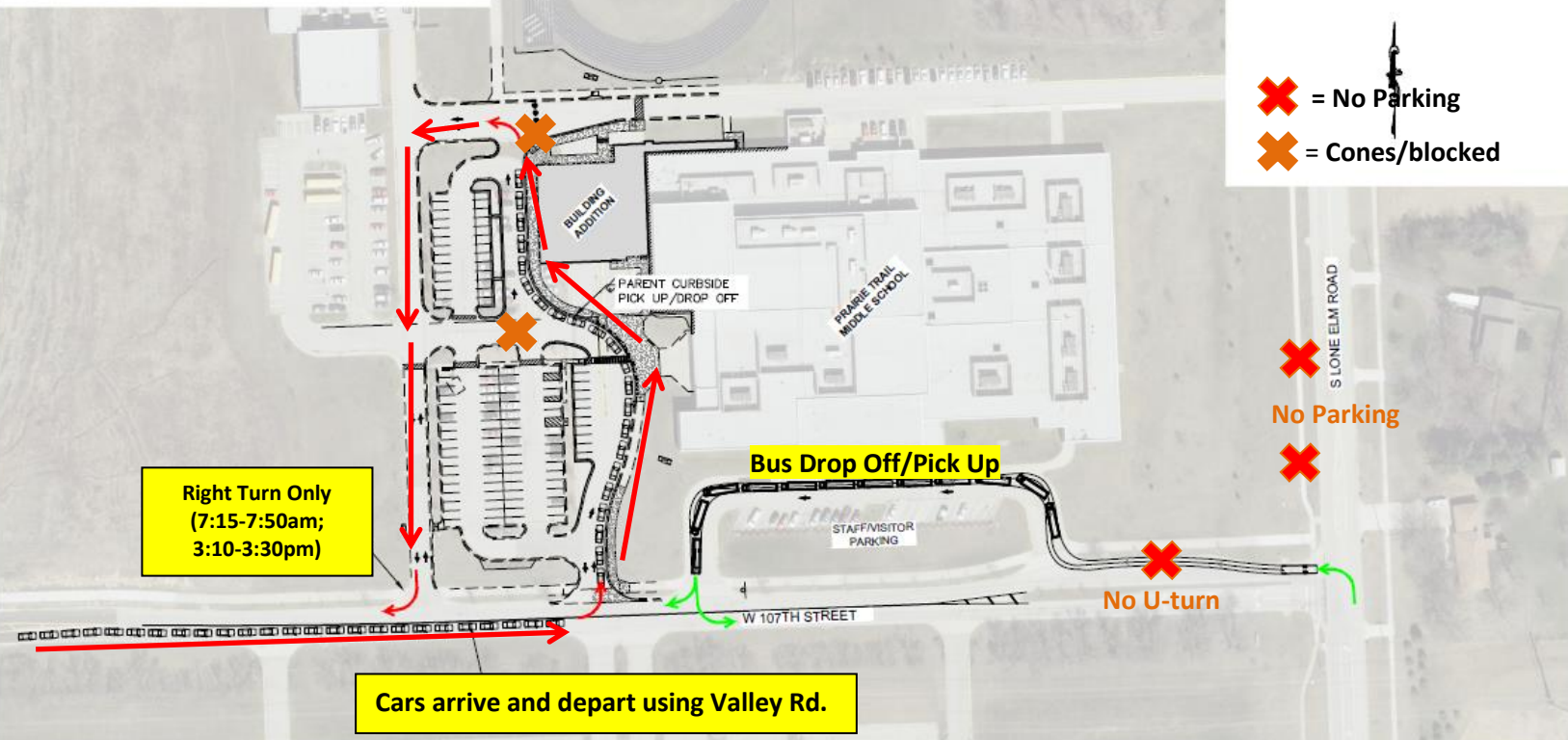
PRAIRIE TRAIL MIDDLE SCHOOL  
TRAFFIC CIRCULATION PLAN

→ PARENT PICKUP / DROP OFF ROUTE

→ BUS/VAN PICKUP / DROP OFF

✗ = No Parking

✗ = Cones/Blocked



**KV**  
KAW VALLEY ENGINEERING

14700 WEST 114TH TERRACE  
LENEXA, KANSAS 66215  
PH. (913) 894-5150 | FAX (913) 894-5977  
lx@kveng.com | www.kveng.com

OCTOBER 21, 2015  
PRAIRIE TRAIL MS TRAFFIC

All traffic should arrive from Valley Road. Traffic coming from Lone Elm after 7:20am will be directed to Valley Road to complete a U-turn back into the traffic pattern. This measure helps make student drop-off more efficient. The front drive is used for bus traffic only from 7:15-7:40 and 3:10-3:20pm. An exception to this guideline is visitors who are park and come into the building.

Following this plan promotes the greatest amount of safety for our students, staff, and drivers.